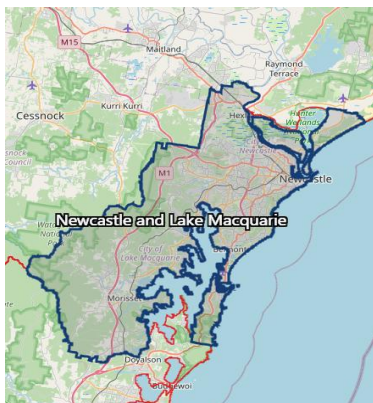


Newcastle & Lake Macquarie

Awabakal, Worimi and Mindaribba Country

Scan QR for full report



Poverty & Demographics



Poverty Rate

11.89%

13.4%



Single Parent Families

17.4%

15.8%



Median Household Income

\$1,676

\$1,829

Housing and Financial Stress



81%

people are living in housing stress.¹

57%

have gone without essential hygiene products due to the cost.

55%

people have skipped meals because they short of money.

Health



25%

One in four people went to ED because they could not access a GP.²

53%

people went without a prescribed medication due to costs.



211%

The number of residents who have delayed or avoided seeing a GP due to cost has almost tripled since 2020 – increasing 211%.

Children and Young People



12.3%

children are living in poverty at a cost of \$2.1 billion.⁴

6.37%

young offenders (1357) across NSW in the last year were in the Newcastle Lake Macquarie Region.⁶

11.4%

children are developmentally vulnerable in two or more domains.⁵

Local Challenges



26.6

pokie machines for every 1000 people across Newcastle, compared to the NSW average of 14.⁷

44%

people identified climate change as an issue they are concerned about for themselves.⁸

0 Bulk Billing

In Newcastle there are no GPs who offer Bulk Billing for patients.⁹

¹ Impossible Choices: Decisions NSW families shouldn't have to make. Regional Snapshot. NSW Council of Social Service. Following statistics have come from the NCOSS Cost of Living report. ² Access Denied: Australians Locked Out of Quality Healthcare Patient Experience and Socioeconomic Disadvantage in NSW. NCOSS 2024/2024. ³ NSW Street Count results. NSW Government. ⁴ Lasting Impacts of Child Poverty. NCOSS. ⁵ Australian Early Development Census 2024. Data by SA4. ⁶ Trends in youth offending in NSW 2025. NSW Bureau of Crime Statistics and Research. ⁷ Liquor and Gaming NSW. Electronic Gaming Machines by SA2. ⁸ Social Justice Stocktake 2025. Salvation Army. ⁹ SBS. (2023). Just 35 Per Cent of GP Clinics Bulk Bill New Patients. Here's How Your Area Compares. ¹⁰ Poverty rate is defined as 15.27% of households. Single parent families is defined as 18.5% of all families. Australian Bureau of Statistics 2022. 2021 Census Quickstats.