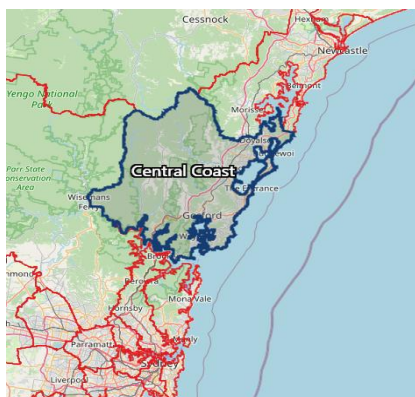


## Central Coast

### Darkinjung Land



Scan QR for full report



#### Poverty & Demographics



Poverty Rate

13.98%

13.4%



Single Parent Families

19.2%

15.8%



Median Household Income

\$1507

\$1,829

#### Housing and Financial Stress



69%

people are living in housing stress.<sup>1</sup>

47%

have gone without meals because they were short of money.

7th highest

Central Coast had the seventh highest increase in rough sleepers in the 2025 Street Count.<sup>3</sup>

#### Health



25%

One in four people went to ED because they could access a GP.<sup>2</sup>

49%

people went without a prescribed medication due to costs.

370%

The number of residents who have delayed or avoided seeing a GP due to cost has increased over 370% since 2020.

#### Children and Young People



13.9%

children are living in poverty across the Central Coast at a cost of \$2.2 billion.<sup>4</sup>

1,048

young offenders in the last 12 months. Just under 5% of the NSW total.<sup>5</sup>

10.7%

children are developmentally vulnerable in two or more domains.<sup>5</sup>

#### Local Challenges



41%

people see alcohol and drug misuse as an issue in the community. Drug induced deaths higher than NSW average.<sup>6</sup>

38%

people across the Robertson electorate identified climate change as something they are concerned about.<sup>8</sup>

2608

pokie machines across 35 venues in the Wyong LGA. Amongst the highest number in the state.<sup>7</sup>

<sup>1</sup> Impossible Choices: Decisions NSW families shouldn't have to make. Regional Snapshot. NSW Council of Social Service. Following statistics have come from the NCOSS Cost of Living report. <sup>2</sup> Access Denied: Australians Locked Out of Quality Healthcare Patient Experience and Socioeconomic Disadvantage in NSW. NCOSS 2024/2024. <sup>3</sup> NSW Street Count results. NSW Government. <sup>4</sup> Lasting Impacts of Child Poverty. NCOSS. <sup>5</sup> Australian Early Development Census 2024. Data by SA4. <sup>6</sup> Trends in youth offending in NSW 2025. NSW Bureau of Crime Statistics and Research. <sup>7</sup> Liquor and Gaming NSW. Electronic Gaming Machines by SA2. <sup>8</sup> Social Justice Stocktake 2025. Salvation Army. <sup>9</sup> Poverty rate is defined as 15.27% of households. Single parent families is defined as 18.5% of all families. Australian Bureau of Statistics 2022.