

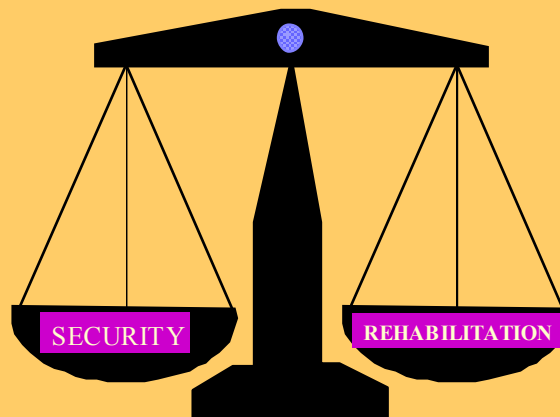
NCOSS Conference presentation



Luke Grant
Assistant Commissioner
Inmate Management
NSW Department of Corrective Services

1

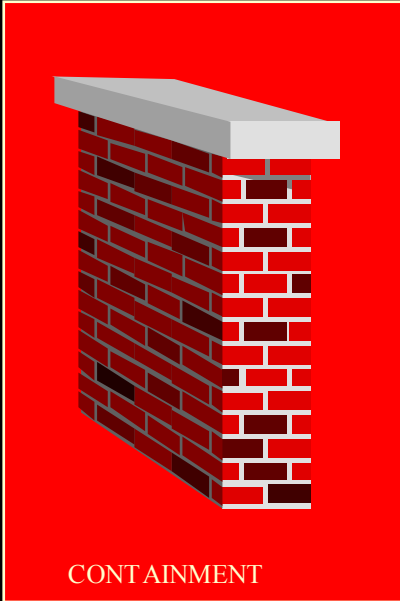
*What emphasis should be placed
on security & treatment?*



*or on minimising the harm of incarceration &
community reintegration?*

2

NOTHING WORKS



WHAT WORKS?



PROGRAMS

NAGLE'S LEGACY

- Loss of liberty should be the extent of the punishment
- inevitability of prisoners returning to the community
- those imprisoned should be kept at the lowest appropriate security and in the most humane environment
- the escape rate is acceptable

Risk prediction

- Gendreau, Little and Goggin conducted a meta-analytical review of the literature on the prediction of recidivism (100 studies)

Antisocial supports**

Antisocial thinking**

Antisocial personality**

Criminal History**

AOD**

Employment /education*

Age/gender/race*

Intelligence

Lower class

personal distress

5



Mission Statement

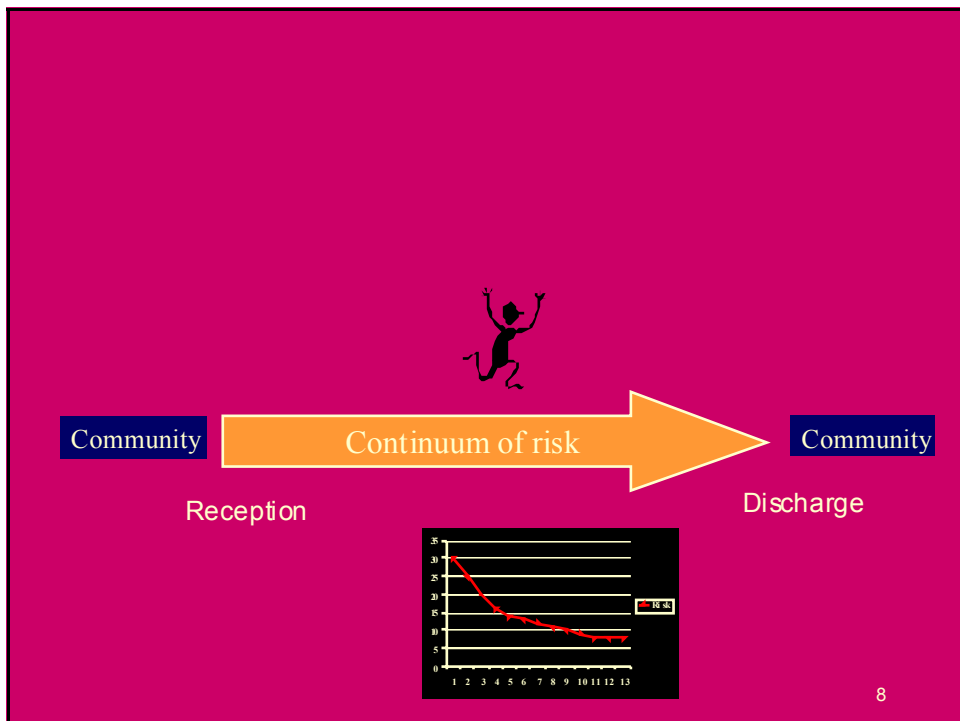
Reduce re-offending through secure,
safe and humane management of
offenders

Corporate Plan
2001-2004

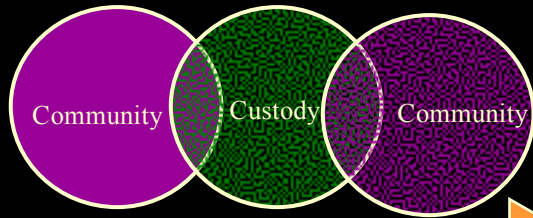
6

Tensions

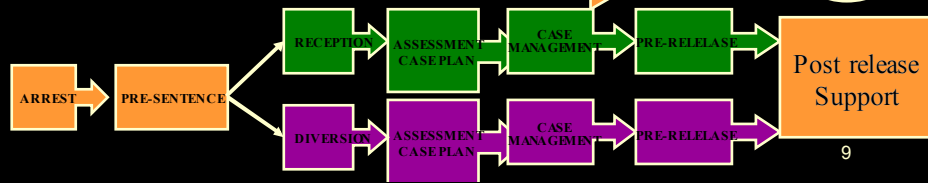
- The need to prevent escapes
- To meet the specific criminogenic needs of inmates and provide opportunities to address issues surrounding offence
- To maintain community confidence/to manage the public perception



Throughcare

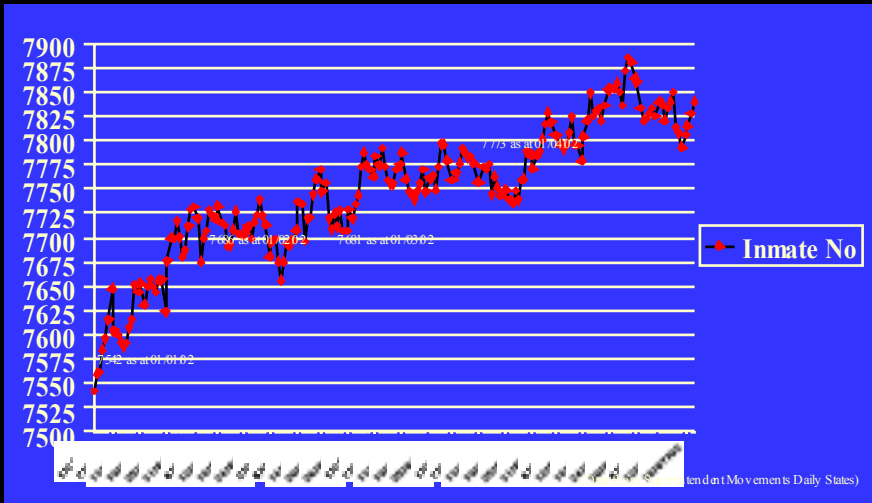


Throughcare seeks to reduce offending by linking case management in the community and custody, eliminating duplication of services, maximising the integration of activities & to achieve community reintegration

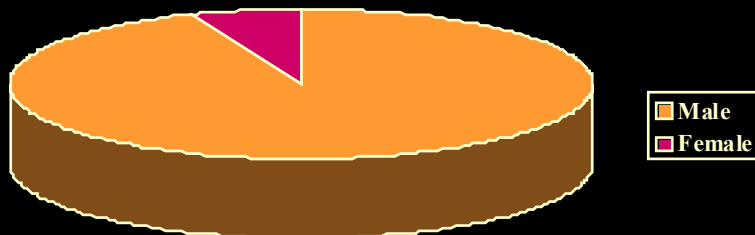


Challenges

NSW Inmate Population 1 January 2002 – 22 July 2002

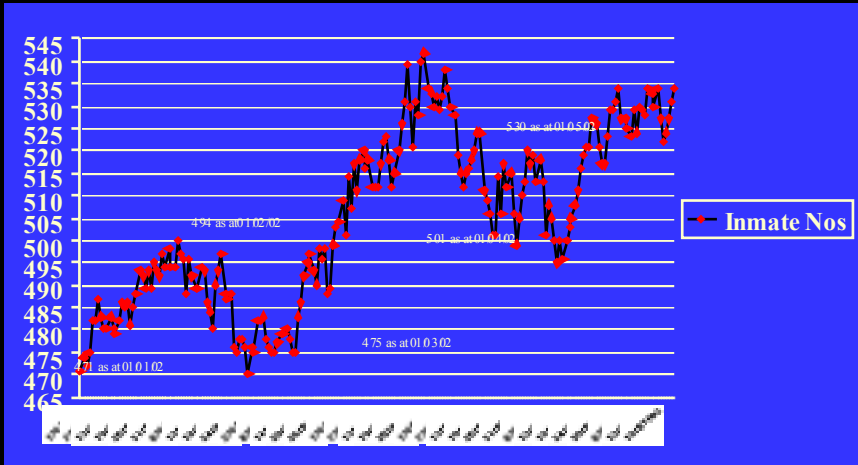


Of the total inmate population of 7900



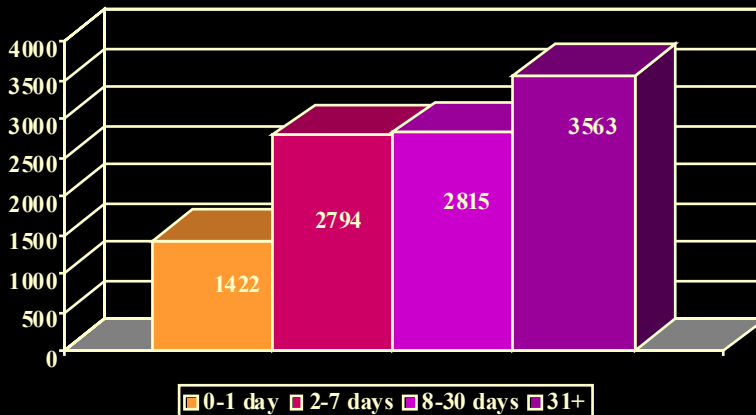
Only 6-7% female

Female Daily State 1 January 2002 – 22 July 2002



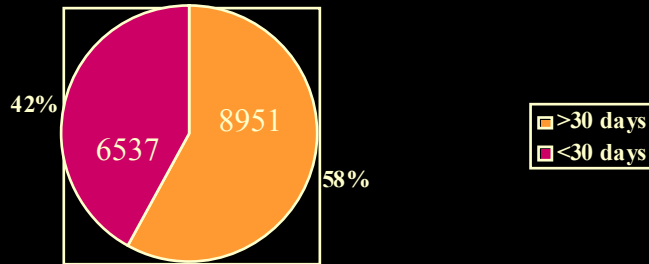
(Data from Superintendent's Movements Daily States)

Length of time spent on remand 2000/01 (Total=10,594)



66.4% SPEND LESS THAN 30 DAYS IN CUSTODY

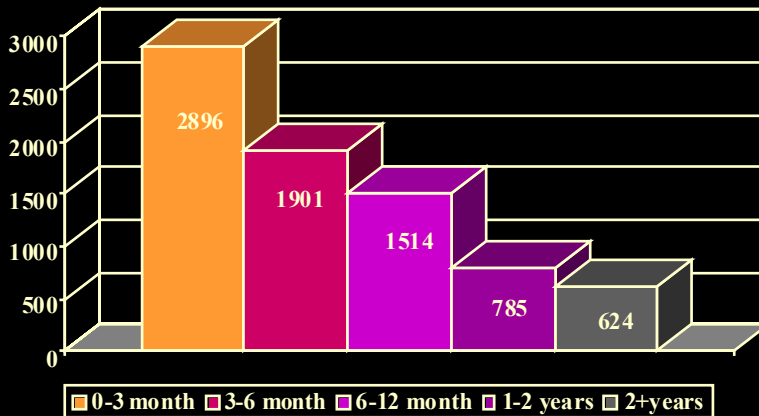
Time Spent in custody - New receptions 2001/2002



Total receptions = 15488

15

Sentenced Receptions Time to serve (EPRD) 2001/02 (Total=7720)



38% Serve sentences of less than 3 Months
4,263 received from bail

16

Common Offender Characteristics

- Age/gender/race/class
- Major alcohol and other drug problems (linked to offending)
- Mental health disorders: illness, disability and personality disorder,
- Anger, aggression and violence
- Poor impulse control
- Poor problem solving and hopeless decision making capacity

17

Common Offender Characteristics (cont)

- Poor literacy/education levels
- Low levels of adaptive living skills
- Limited communication skills
- Inadequate conflict resolution skills
- Difficulties in establishing & maintaining relationships
- Poor self concept

18



National Mental Health Interview 12 Month prevalence

- Psychosis (+ve screen) 11% male and 14% female - 7% after psychiatric assessment
- Major depression - 21% male and 46% female
- Bipolar disorder - 0.1% male and 5.4% female
- 33% male and 50% female had contact with mental health services in the last six months

*National Mental Health Interview
Alcohol and other Drug Use
12 Month prevalence dependence/abuse*

- Opioids - 33/66% male and 50/50% female
- Amphetamines - 23/31% male and 45/46% female
- Alcohol - 17/30% male and 16/17 female%
- Cannabis - 15/26% male and 19/21%
- Sedatives - 11/10% male and 23/27% female

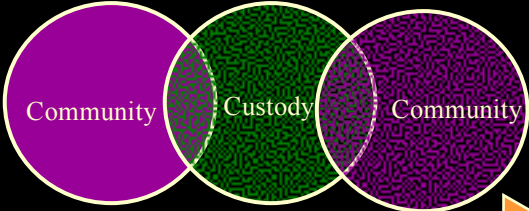
(n= 754M/169F)²¹

Offenders in the community

- 18,194 offenders currently under supervision in the community
- Supervision orders (11,511);
- CSOs (4761);
- Parole Orders (3,754)

Periodic Detention - 890 warrants
Home Detention - 185

Throughcare



Throughcare seeks to reduce offending by linking case management in the community and custody, eliminating duplication of services, maximising the integration of activities & to achieve community reintegration

